



Bombard

[bombard.com](http://bombard.com)

**Bombard**



@Bombard1972

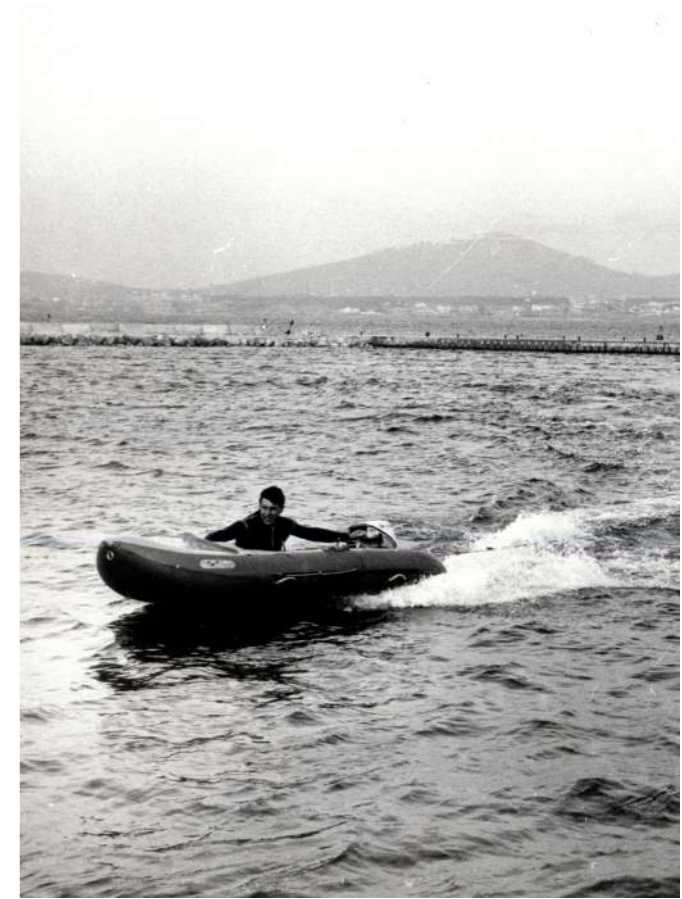
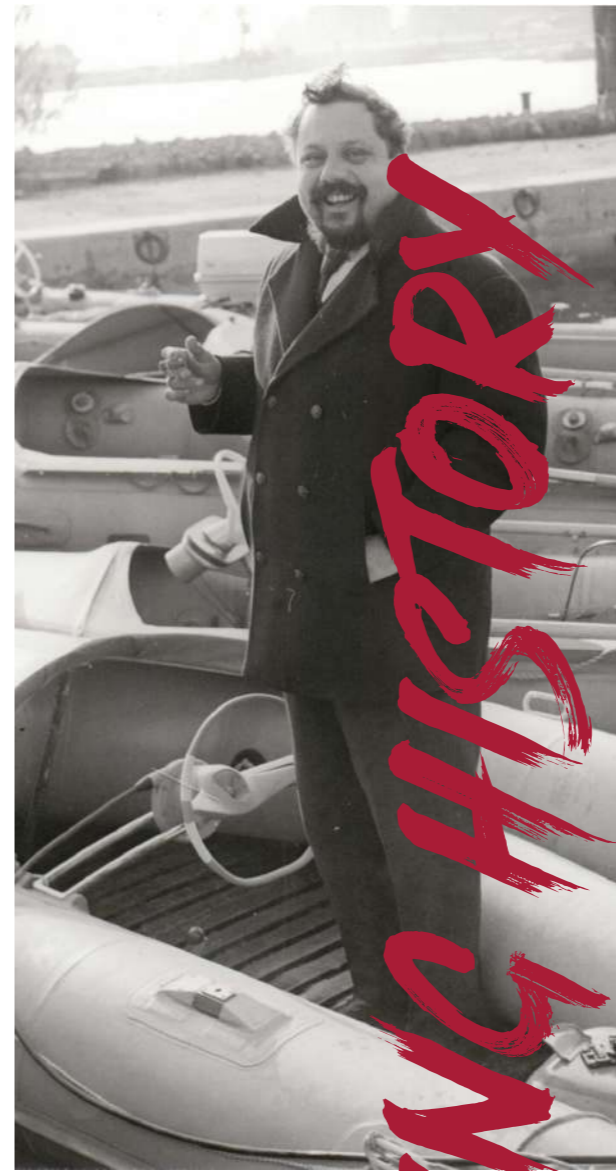
# Bombard

## MORE THAN A NAME, A CALL TO EXPLORE.

Seventy years ago, Alain Bombard, a 27-year-old Doctor-Sailor left Las Palmas in the Canary Islands. He sailed on an inflatable boat named The Heretic, with neither water nor food.

He went on to sail a quarter of the way around the world, in the worst conditions, before landing safe and sound two months later on the Caribbean island of Barbados. Eating fish and plankton and drinking fish juice and rain water, he proved that it's possible for a shipwrecked sailor to survive at sea thanks to the ocean's riches.

With his book entitled The Bombard Story, published in 1958, he acquired a worldwide reputation and later took part in a variety of research work and in the development of liferafts.



In France and abroad, his name remains linked to surviving at sea, and more broadly to the protection of the sea and its ecology. Alain Bombard forged the values of adventure and reliability of the brand bearing his name.

BombardTM boats refer to this heritage every day by offering safe and strong products.

For more than 50 years, BombardTM participated in expeditions all over the world: Cap Horn, Bering Strait, Patagonia, shooting of the Oceans movie in extreme conditions... These adventures offer absolutely essential real-life testing opportunities for developing our boats. Every BombardTM boat is designed for action, adventure, the discovery of spaces but also to enable professionals to work in the best conditions.

A BombardTM boat is first of all a boat made for the sea - functional, safe, strong and reliable: there is no kidding with the sea. This absolute rigour in designing and building our boats doesn't keep us from also offering equipment to make life on board easier and to allow every sea related activity: diving, waterskiing, wakeboarding, fishing, spearfishing, etc.

bombard.com

A LASTING HISTORY

# THE SECOND COMING OF A BEST-SELLER...

A new limited edition Bombard Blue Story

For its 20th anniversary, the Sunrider has been given a makeover! This year, the best-selling Bombard that needs no introduction has adopted a "cruising chic" look. With its two-tone blue neoprene tube, its ochre quilted upholstery with crossed stitching, its wood-colour EVA deck and its "blue story" details, it will make all heads turn... This limited edition exists in Sunrider 550 or in Sunrider 650 versions, always at a competitive price from our Bombard dealer network.

ATTENTE PHOTO



- Neoprene blue & white buoyancy tube
- Ochre quilted upholstery with crossed stitching
- EVA deck and its "blue story" details
- Upholstery kit (locker seatback + cushion)
- "Blue story" stickers
- Black console décor and wheel
- New design straight lashing

# GAMMIES DIVERSITY

## EXPLORER

SEMI-RIGID P.10



420  
500  
550  
600  
700

## SUNRIDER

SEMI-RIGID P.16



500  
550  
650  
700

## COMMANDO

FOLDABLE P.30



C3  
C4  
C5

# SOLID AS A ROCK

# EXPLORER



The Explorer's versatility is limitless: diving, fishing, spearfishing, waterskiing... nice weather, light wind or strong sea? No problem, the Explorer is always there for you, safe.

The range comprises five models, with all of the attributes that ensure the success of this series: a deep V hull for sharp handling and go-anywhere abilities with à la carte layouts.

## SIZES





**420**



**500**



**550**



**600**



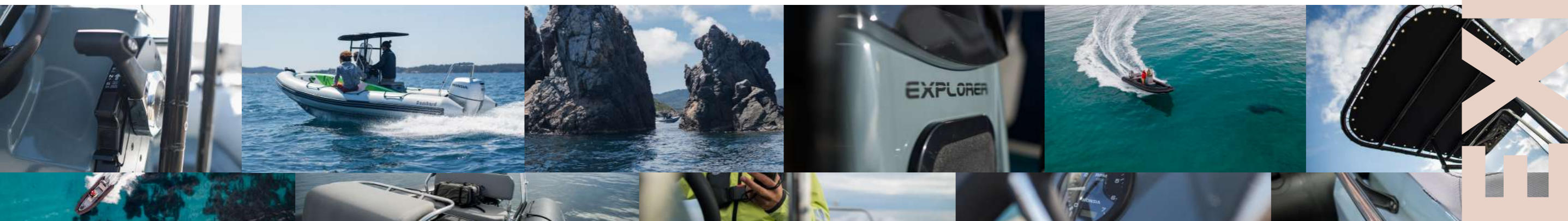
**700**

Length overall inside (m)	4,20	5,01	5,5	5,98	6,90
Width overall inside (m)	1,90	2,08	2,18	2,47	2,54
Weight (kg)	165	240	280	390	820
Passengers	7	10	14	13	16
Max. power allowed (Hp)	50	70	90	150	250
Fuel tank (litres)					200

## STANDARD EQUIPMENT\*

- Nonslip deck
- One bow ring
- Two aft tow rings
- Two high volume bailers
- One draining flush
- Bow locker
- Rail-mounted tube (420 and 700)
- Bonded tube (500->600)
- Easy Push valves
- Lashing
- Polyester or PVC bow forceps depending on model
- One air-pump
- Swimming ladder

## BUILD YOUR OWN



# ELEGANT AND FUNCTIONAL

# SUNRIDER



The Sunrider range offers the best value for money on the market, optimising perfect sea-keeping and a capacity to embark all your passengers in perfect safety.

Its equipment and fittings ensure exemplary comfort and ease of use. The numerous storage compartments and its modularity make this an extremely functional boat for all to enjoy.

SIZES





**500**



**550**



**650**



**700**

Length overall inside (m)	5,00	5,50	6,35	7,00
Width overall inside (m)	2,10	2,18	2,45	2,54
Weight (kg)	310	350	470	820
Passengers	9	11	13	16
Max. power allowed (Hp)	70	90	150	250
Fuel tank (litres)	54	77	77	200

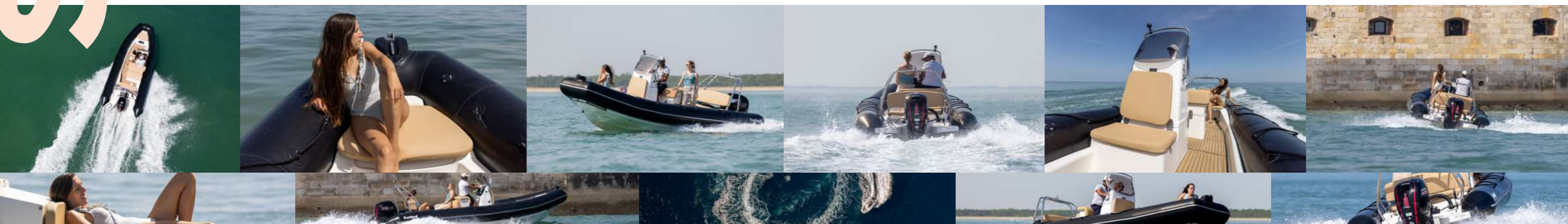
## STANDARD EQUIPMENT\*

- Bow locker
- Pronounced V-shaped fibreglass hull
- Nonslip deck
- Front seat
- Steering console
- Comfortable aft bench seat
- Tube with lashing
- Polyester bow forceps

## MAIN OPTIONS

- Table + extension kit Sunbed
- Aft cockpit picnic table
- Extension to aft sunbed
- Roll bar
- Waterskiing post
- Bimini
- EVA deck
- Cushion seatback
- Aft cockpit seating
- Turboswing

## BUILD YOUR OWN





# A BOAT WITH CHARACTER

COMMANDO



The Commando is a boat made for action: rigid keel, aluminium deck, it makes its way with power and precision, under all circumstances. Is it a surprise that it tends to attract explorers as well as fishing and spearfishing fans?

SIZES





**C3**



**C4**



**C5**

Length overall inside (m)	3,80	4,30	4,70
Width overall inside (m)	1,75	1,75	1,90
Weight (kg)	98	109	128
Passengers	6	7	9
Max. power allowed (Hp)	40	50	60

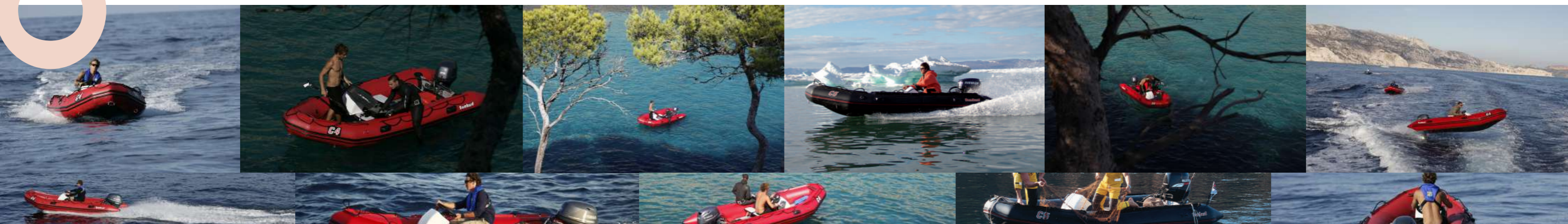
## STANDARD EQUIPMENT\*

- Rigid keel
- Aluminium deck
- Mounting points for launching wheels
- Two drains for flushing
- Easy Push valves
- Two "D" tow rings
- Two "D" lift rings
- Four carrying handles

## MAIN OPTIONS

- Mini console on a bench
- Bench on a rail
- Rigid decking + flap
- Tarp Launching wheels
- Tendoline canopy (C4 and C5)
- Mooring cover
- Rigid side ladder

## DISCOVER THE RANGE





**5**  
**YEAR**  
**WARRANTY\***



**AN INTERNATIONAL DEALER  
NETWORK YOU CAN TRUST**

Present in over 50 countries around the world, Zodiac Nautic and its 1,600 dealers put their expertise at your service.

Our network guarantees you will always find efficient and reliable after-sales service: whether you need a new accessory or need to replace a lost part, you are sure to find a Zodiac Nautic dealer that can put their expertise to work for your pleasure. Our dealers often maintain the same boat for over 20 years!

Please don't hesitate to ask them: they can advise you when buying your boat and can then handle its maintenance. We count on them and they deserve your trust.

Find all of our sales outlets:

**BOMBARD.COM**

\*See terms of application at your dealer.



**JOIN  
THE  
CLUB**

**YOU ARE OUR BEST  
AMBASSADORS!**

Buying a Bombard is joining a community first and foremost.

A community of enthusiasts, of pioneers.

A community of owners who know that the quality of a boat starts on the drawing board.

That resistance, reliability, robustness go hand in hand with safety and peace of mind.

A community that knows how to share a good deal, advice, experience.

A community that gets together around the world for unique events and who know that a Zodiac is much more than just a boat.

**So what's stopping you from joining us?**

→ **CREATE YOUR ACCOUNT ON BOMBARD.COM**



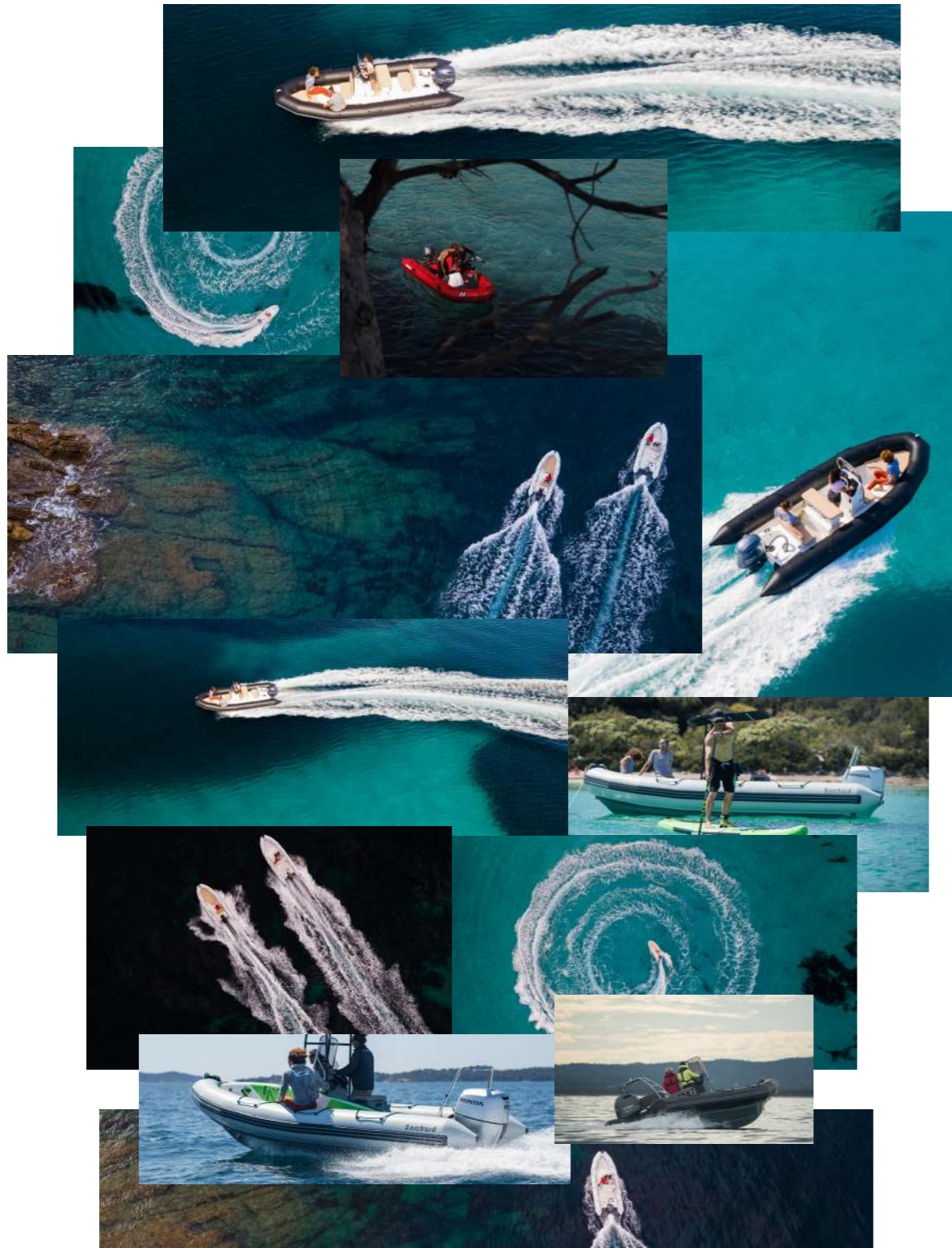
# TECHNICAL SPECIFICATIONS

	EXPLORER				
	420	500	550	600	700
<b>DIMENSIONS</b>					
Length overall (m - ft)	4,2 - 13'9"	5,01 - 16'4"	5,5 - 18'1"	5,98 - 19'8"	6,9 - 22'14"
Inside length (m - ft)	2,9 - 9'6"	3,6 - 11'10"	4,1 - 13'5"	4,47 - 14'8"	5,71 - 18'9"
Width overall (m - ft)	1,9 - 6'3"	2,08 - 6'10"	2,18 - 7'2"	2,47 - 8'1"	2,54 - 8'4"
Inside width (m - ft)	0,95 - 3'1"	1,08 - 3'7"	1,18 - 3'10"	1,37 - 4'6"	1,39 - 4'7"
Tube diameter (m - ft)	0,455 - 1'6"	0,5 - 1'8"	0,5 - 1'8"	0,55 - 1'10"	0,575 - 1'11"
Hull angle	19°	22°	27°	20°	24°
<b>CAPACITY</b>					
Design category	C	C	C	C	C
Passengers (ISO)	7	10	14	13	16
Max. payload allowed (kg-lb)	780 - 1720	1085 - 2392	1230 - 2712	1580 - 3483	1960 - 4321
Total weight (kg-lb)	165 - 364	240 - 528	280 - 617	390 - 860	820 - 1808
Number of waterproof compartments	3	5	5	5	5
<b>PROPULSION</b>					
Shaft	L	L	L	XL	XL
Max. Power allowed (Hp)	50	70	90	150	250
Max. power allowed (kW)	-	53	68	112	147,2
Max. outboard weight allowed (kg-lb)	115 - 253,5	170 - 375	200 - 441	231 - 509	301 - 663,5

	COMMANDO		
	C3	C4	C5
<b>DIMENSIONS</b>			
Length overall (m - ft)	3,8 - 12'6"	4,3 - 14'1"	4,7 - 15'5"
Inside length (m - ft)	2,5 - 8'2"	3 - 9'10"	3,2 - 10'6"
Width overall (m - ft)	1,75 - 5'9"	1,75 - 5'9"	1,9 - 6'3"
Inside width (m - ft)	0,84 - 2'9"	0,84 - 2'9"	0,9 - 2'1"
Tube diameter (m - ft)	0,455 - 1'6"	0,455 - 1'6"	0,5 - 1'8"
Hull angle	-	-	-
<b>CAPACITY</b>			
Design category	C	C	V
Passengers (ISO)	6	7	9
Max. payload allowed (kg-lb)	750 - 1654	870 - 1918	1150 - 2535
Total weight (kg-lb)	98	109	128
Number of waterproof compartments	3	3	4
<b>PROPULSION</b>			
Shaft	S	S	L
Max. Power allowed (Hp)	40	50	60
Max. power allowed (kW)	30	38	45
Max. outboard weight allowed (kg-lb)	98 - 216	109 - 216	128 - 282

	SUNRIDER			
	500	550	650	700
<b>DIMENSIONS</b>				
Length overall (m - ft)	5 - 16'5"	5,5 - 18'1"	6,35 - 20'10"	6,9 - 22'14"
Inside length (m - ft)	3,77 - 12'4"	4,2 - 13'9"	4,8 - 15'9"	5,71 - 18'9"
Width overall (m - ft)	2,1 - 6'1"	2,18 - 7'2"	2,45 - 8'0"	2,54 - 8'4"
Inside width (m - ft)	1,1 - 3'7"	1,22 - 4'0"	1,35 - 4'5"	1,39 - 4'7"
Tube diameter (m - ft)	0,5 - 1'8"	0,5 - 1'8"	0,55 - 1'10"	0,575 - 1'11"
Hull angle	22°	26°	21°	24°
<b>CAPACITY</b>				
Design category	C	C	C	C
Passengers (ISO)	9	11	13	16
Max. payload allowed (kg-lb)	1060 - 2337	1060 - 2337	1060 - 2337	1060 - 2337
Total weight (kg-lb)	310 - 682	350	470	820
Number of waterproof compartments	5	5	5	5
<b>PROPULSION</b>				
Shaft	L	L	L	XL
Max. Power allowed (Hp)	70	90	150	250
Max. power allowed (kW)	53	68	115	184
Max. outboard weight allowed (kg-lb)	170 - 375	175 - 385	226 - 498	291 - 641

# Bombard



@Bombard1972



**Bombard**

[bombard.com](http://bombard.com)